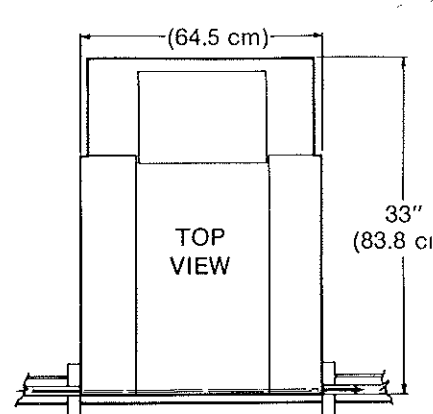
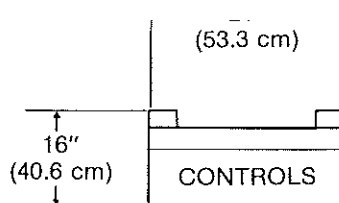




REFORMER® 300

Tablet & capsule counter-fillers



PERFORMANCE

Estimated Speed Table:

Type of Product	Approximate Speed-Bottles/Minute	
Aspirin Tablet 13/32" dia (10.3 mm)	50 count	70 bottles per min.
	100 count	50 bottles per min.
Capsule Size #1	50 count	60 bottles per min.
	100 count	40 bottles per min.

Speeds are affected by factors such as: size and shape of product, hardness, coating, container size and shape, tolerances of product, type of conveyor. When supplied with product and container samples, we can reasonably estimate speeds.

Basic Change Parts:

- Set of thirty product-carrying slats
- Bottle chute set
- Divider assembly
- Feeder screen

Drive:

Variable 1/4 HP D.C. with brake.

Controls:

Start and stop push buttons for routine operation. Other switches, timers, counters for set up purposes.

CONSTRUCTION

Basic Machine:

Portable, with floor locks. Stainless steel, anodized aluminum, high-performance coatings are used.

Contact Materials:

Stainless steel, acrylic, other approved plastics.

Size:

Height: 60"-75" (152 cm-190 cm)	Width: 25 1/2" (64.5 cm)	Length: 33" (83.8 cm)
------------------------------------	-----------------------------	--------------------------

Net Weight:

600 lbs. (272 kg)	Gross Weight: 850 lbs. (385 kg)	Crate Size: 6' x 4' x 6' (183 x 122 x 183 cm)
----------------------	------------------------------------	--

Electrical:

115 VAC, Single Phase, 50 or 60 HZ (other voltages available).

Compressed Air:

- Used for bottle indexing - requires 1/2 CFM (14.4 liters/min.) at 30 P.S.I.G. (2.1 K6/cm²) - 1/4 NPT connection.

OPTIONS

Vacuum Dust Collection & Slat Cleaning System

Vacuum Source:

Rotary cleaning brush, Vacuum take-off at strategic positions.

- 1/3 HP Dust collector, 115 VAC/60 HZ, 284 CFM, with one 3" outlet for machine connection.
- Optional 230/460 VAC, 60 HZ, 3 motor.
- Absolute filters, silencers, or use in-house vacuum.

Bottle Control:

Bottle infeed and back-up controls electro-mechanical or photoelectric.

Static Eliminator:

With power supply to remove static charge and the resultant effect on product and performance.

